

How to setup wireless network connection for Thunder laser machine

Here's what you'll need:

A computer with wireless capability; A wireless router with Ethernet cable.

The illustration below shows the configuration of all the components: computer, router, Ethernet cable and laser system.

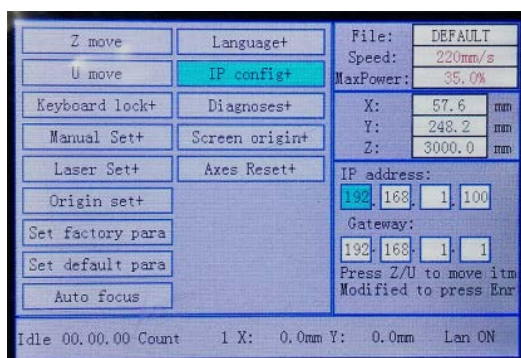
1. Laser and router setup

- 1) Connect laser with the router using Ethernet cable.
- 2) Connect the power to the router
- 3) Set control panel IP

Go to LCD Panel **【Z/U Button】 / 【IP config+】** .

Default machine IP: 192.168.1.100, and you should set the Gateway same with router IP.

Our router IP is 192.168.1.1, so set gateway as 192.168.1.1, like below:



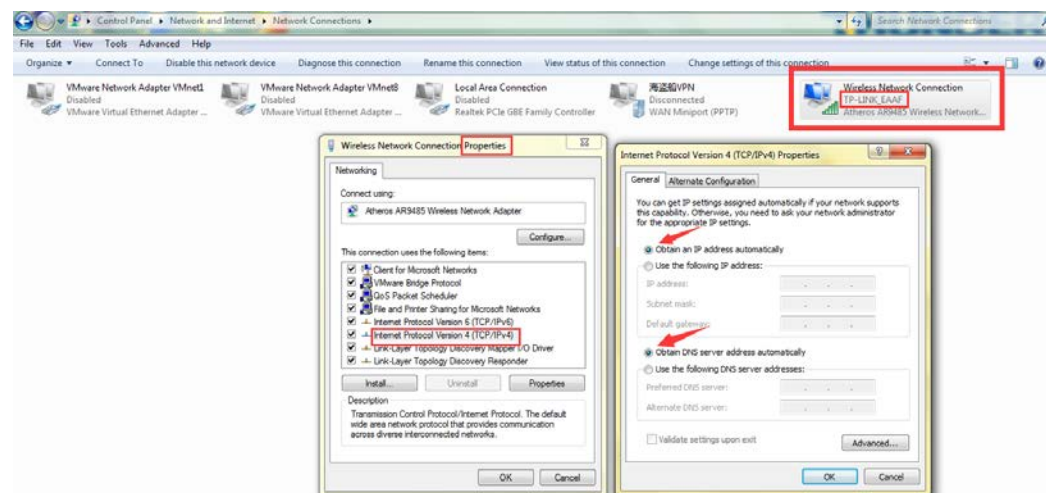
Please note: Most home networking routers have a default IP address assigned in the format of 192.168.1.xxx. If this is not true of your router, you will need to modify the TCP/IP port that you activated to fit the format of the router you are using.

2. Configure computer

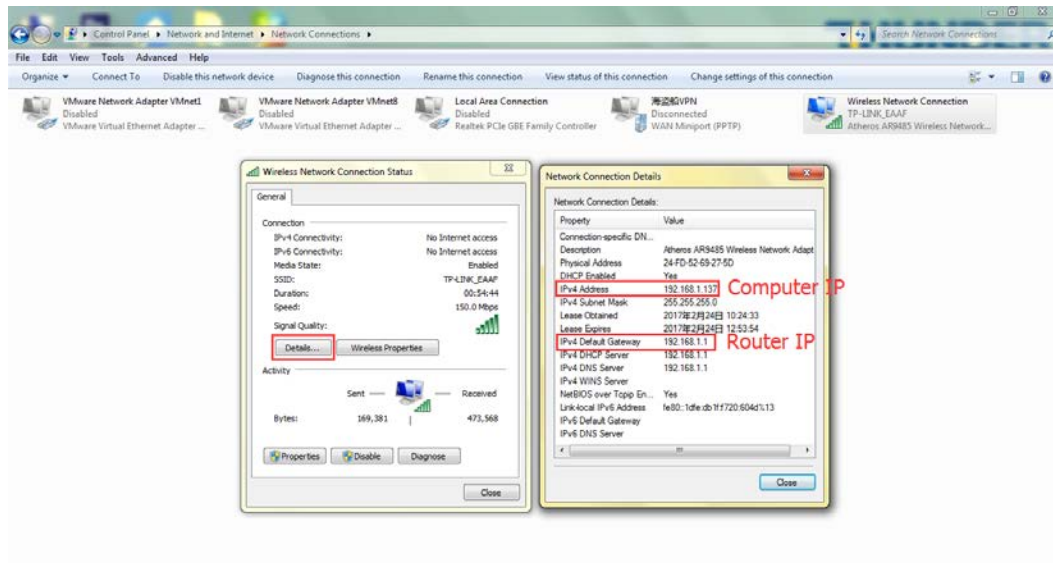
- 1) Open network and sharing enter, like below:



Double click **Wireless Network** connected for router;
 Right-click and go to properties, Double click **Internet Protocol Version 4 (TCP/IPv4)** ;
 Select <Obtain an IP address automatically>;
 Click <OK> to finish computer IP setup, like below:



2) Check current IP for computer and router.



3) Setting for RDworks

Add and select the Web port.

